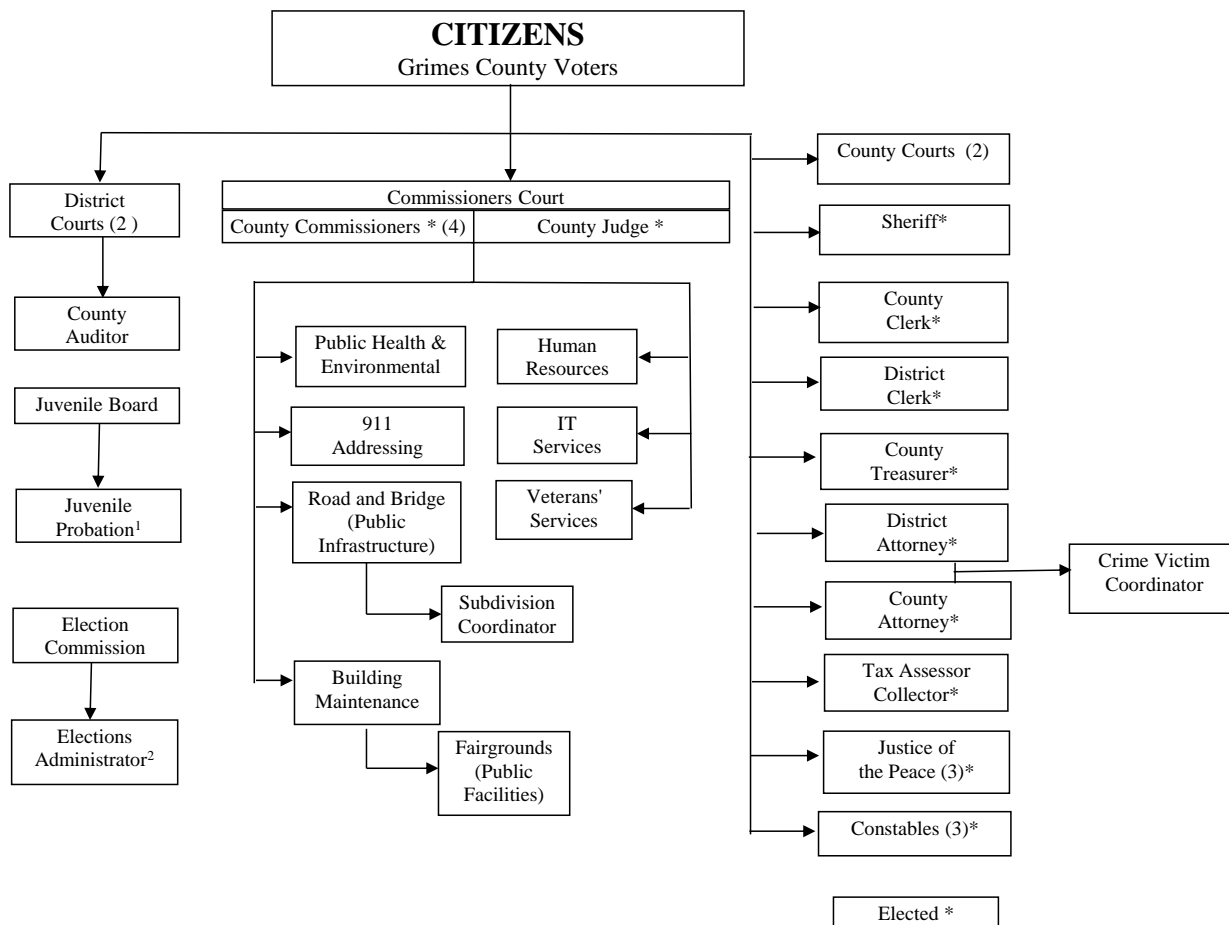


GRIMES COUNTY ORGANIZATIONAL CHART



¹ Juvenile Board (District Judges, the CCL Judge and the County Judge) may, with the advice and consent of the Commissioners Court, employ probation officers and staff.

² The position of county elections administrator is filled by appointment of the county election commission (County Judge, Tax Assessor, County Clerk and the Party Chairs). The employment of the county elections administrator may be suspended or terminated on the four-fifths vote of the county election commission and approval of that action by a majority vote of the commissioners court.