

GRIMES COUNTY ROAD & BRIDGE DEPARTMENT

GRIMES COUNTY MOBILITY PLAN



ADOPTED BY GRIMES COUNTY COMMISSIONERS COURT

APRIL 2, 2025

A handwritten signature in black ink, appearing to read "Joe Fauth III", written over a horizontal line.

COUNTY JUDGE
JOE FAUTH III

A handwritten signature in black ink, appearing to read "Chad Mallett", written over a horizontal line.

PRECINCT 1 COMMISSIONER
CHAD MALLET, P.E.

A handwritten signature in black ink, appearing to read "Michael Raska", written over a horizontal line.

PRECINCT 3 COMMISSIONER
MICHAEL RASKA

A handwritten signature in black ink, appearing to read "David Tullos", written over a horizontal line.

PRECINCT 2 COMMISSIONER
DAVID TULLOS

A handwritten signature in black ink, appearing to read "Phillip Cox", written over a horizontal line.

PRECINCT 4 COMMISSIONER
PHILLIP COX

AUTHORITY

The Grimes County Mobility Plan is adopted by the Commissioners Court of Grimes County, Texas acting in its capacity as the governing body of Grimes County. The authority of Grimes County to adopt the Mobility Plan is derived from the following statutes:

Texas Transportation Code § 251.016 - Authority of Commissioners Court to exercise general control over all roads, highways, and bridges in the County.

Texas Local Government Code § 232.102 - Authority of a County to require rights-of-way width up to a certain width.

Texas Transportation Code § 251.007 - Authority of a Commissioners Court to classify County Roads.

Texas Transportation Code § 251.052 - Authority for public application for a change to a public road.

Texas Transportation Code § 252.309 - Authority of a County Engineer to ensure that the policies of the Commissioners Court related to County Roads are faithfully executed.

The Grimes County Mobility Plan may be amended at any time by a majority vote of Commissioners Court.

AREA COVERED BY THE MOBILITY PLAN

The Grimes County Mobility Plan shall apply to the unincorporated areas of Grimes County, Texas and, if approved under an agreement between Grimes County and the governing body of any municipality within Grimes County, shall apply to that municipality's extraterritorial jurisdiction and/or within that municipality's boundaries as identified by the agreement.

GRIMES COUNTY MOBILITY PLAN



The Grimes County Mobility Plan is a 50+ year strategy that identifies and classifies transportation corridors and preserves rights-of-way for future development.

Grimes County's existing transportation corridors are generally narrow with inadequate lane widths, drainage systems, and visibility. Most corridors also have encroaching fencing and vegetation, creating safety hazards. Expanding corridors beyond 60 feet is essential to accommodate increased traffic, proper drainage, and road design for future growth.

The Mobility Plan provides guidelines for development projects to consider road and drainage designs adjacent to or within the development. It is critical to consider each road's future classification and right-of-way needs to support increased property values and long-term viability for commercial, industrial, and agricultural development.

Grimes County's population growth has outpaced projections from the 2016 Thoroughfare Plan, necessitating updated planning guidelines to support this growth. Increased development will lead to higher population densities and more vehicle traffic, putting strain on the existing transportation network.

Grimes County may face resistance to long-term planning from project stakeholders due to limited financial resources, lack of consensus on design standards, political pressures, and need for expedited plat approvals. Despite these challenges, Grimes County must consistently apply the Mobility Plan during plat approval and permitting to ensure the future effectiveness of its transportation network, to safeguard public safety, and to minimize future infrastructure costs.

The following standards apply to road and drainage corridors in the unincorporated areas of Grimes County:

1. All corridors in Grimes County are assigned one of the following classifications, based on anticipated future road and land-use conditions:
 - a. Local Subdivision Road
 - b. Local County Road
 - c. Collector
 - d. Rural Minor Arterial
 - e. Rural Major Arterial

"Corridor" means a geographical band that follows a general directional flow connecting major sources of trips. "Corridor" may be used interchangeably with "Right of Way", "Road" or "Roadway", "Road Segment" or "Roadway Segment" etc. throughout the Mobility Plan.

2. The classification for each road is shown on the Grimes County Mobility Plan Map and the Road Classification Matrix.
3. Road classifications are based on projected future average daily traffic. Ultimate road and drainage build-out requirements account for future average daily traffic. Future right-of-way widths account for drainage ditches, as the geological and topographical conditions of Grimes County are not conducive to storm sewer installation.
4. The 2025 Grimes County Mobility Plan Map is an updated version of the “*Proposed Road Classification and Land Suitability*” map in the 2016 Grimes County Thoroughfare Plan. The map will be updated annually according to the procedure in Section 18 and shall be published to the Grimes County Road & Bridge Department website.
5. The Road Classification Matrix was developed for ease of reference and shall not supersede the Map.
6. An "existing" road classification means the current roads, routes, and infrastructure that are already built and in use. A "proposed" road classification means planned or future roads and infrastructure that will be upgraded to accommodate anticipated growth and traffic needs.
7. The guidelines in this section were used to classify existing County Roads:
 - a. Existing County Roads with the identification “Local” in the 2016 Thoroughfare Plan, that will remain two-way primarily residential roads serving tracts that are not likely to be subdivided further, or are located within an existing platted subdivision, are considered “Local County Roads”.
 - b. Existing County Roads with the identification “Local” in the 2016 Thoroughfare Plan, used to travel overland between properties with the potential to be further subdivided, and are not located within a platted subdivision, shall be considered “Collectors”.
 - c. Existing County Roads with the identification “Collector” shall be considered future “Rural Major Arterials”. These roads may be reclassified to “Rural Minor Arterials” due to geographical or topographical limitations by the County Engineer.

The map legend shows the correct classification of each road. This section is necessary to show the difference in road classifications between the 2016 Plan and the 2025 Plan, required due to higher population growth and traffic demand than predicted in 2016.

8. The Grimes County Engineer, and/or their designee, shall not submit a plat for approval by Commissioner Court, or approve any permit, if the proposed design conflicts with the Grimes County Mobility Plan.
9. Right-of-way widths and associated design dimensions, per road classification are as follows:

Road/ROW Classification	ROW Width (ft)	Lane(s) #	Lane Width (ft)*	Shoulder Width (ft)
Rural Major Arterial	120	2-4	12	4-ft plus 2-ft berm
Rural Minor Arterial	100	2-4	12	4-ft plus 2-ft berm
Collector	80	2-3	11-12	2
Local County Road	60-80	2	11-12	1-2
Local Subdivision Road	60	2	10-12	0-2

Table 1: Road Classification, ROW Width, Lane Design

10. Right-of-way at horizontal curves must be of sufficient width and dimension to allow AASHTO-compliant alignments accounting for curve radius and superelevation requirements.
11. A Traffic Impact Analysis, when required by Grimes County regulations, shall determine the geometry of any required turn lanes based on the design speed of the roadway and anticipated traffic volumes. The Traffic Impact Analysis shall also identify necessary roadway improvement requirements based on impact to existing County Roads.
12. Turn lanes at the intersection of local roads and corridors must provide 100-ft storage space minimum and 100-ft transition space minimum. Turn lanes at the intersection of arterials must provide 200-ft storage minimum and 150-ft transition minimum.
13. Right-of-way must include adequate space for minimum edge-of-pavement radius at ultimate build-out as follows:
14. Right-of-way must include adequate space for minimum curb radius, cutbacks, and drainage infrastructure at ultimate build-out as follows:

Intersection Type		Minimum edge-of-pavement radius by Intersection Angle (ft)		
Road #1	Road #2	90-degree	85-90 degree	80-85 degree
Local	Local	25	30	30
Local	Collector	25	30	30
Collector	Collector	30	30	35
Collector	Arterial	45	45	50
Arterial	Arterial	50	50	50

Table 2: Intersection Radius Standards

15. Right-of-way must include adequate space for sight triangles either as easements or right-of-way with design parameters as follows:

Road/ROW Classification	Sight Triangle Driver's Eye Setback Distance (ft)	Sight Triangle Dimension on Uncontrolled Street (Design Speed)
Arterial	25 ft	500 ft (45 mph)
Collector	15 ft	390 ft (35 mph)
Local	15 ft	225 ft

Table 3: Sight Triangle Dimensions

16. Roadside ditch depth requirements based on available outfall location may require additional right of way requirements to achieve erosion-proof flow line slopes and drainage ditch front and back slopes.

17. Driveway spacing requirements are assigned to each road segment based on corridor classification and must be considered during permit review and approval to ensure adequate stopping sight distance once a road reaches its projected average daily traffic and is constructed to its ultimate configuration. Driveway spacing is measured from centerline to centerline between driveways as shown in Table 4. Building setbacks are assigned to each road segment and are measured from the ultimate right-of-way boundary to ensure adequate space between the ultimate right-of-way boundary and any structure that is built prior to a road’s final build-out.

Road Classification	Driveway Spacing (ft)	Building Setback
Rural Major Arterial	100	30
Collector	80	30
Local	60	25

Table 4: Driveway Spacing and Building Setback

Setback on state-maintained roads for structures, fences, and gates shall meet either the setback requirements of County Roads or state setback requirements, whichever standard is more stringent.

Gates on all County Roads other than subdivision roads shall have a setback of 100-ft from ultimate right-of-way boundary to ensure that vehicles and trailers are able to clear the roadway when opening or closing a gate. Any driveway application showing a gate setback less than 100-ft must include a statement about the vehicle or trailer to be used on the property.

18. Grimes County may consider public applications for amendments to the Mobility Plan annually and will make every reasonable effort to adhere to the following schedule:

July 31st - Administratively Complete Application Due

1. Request Form
2. Detailed explanation identifying the benefit of amending a corridor. Any amendment that only benefits to an individual project rather than the entire transportation network will not be considered.
3. A detailed exhibit showing the general area of the corridor to be amended
4. Commitment to notify property owners adjacent to the corridor or impacted by the corridor to be amended, as determined by Grimes County staff
5. Commitment to post public notice of a public hearing
6. Application fee

August/September - Meeting with County Engineer and Precinct Commissioner and/or their designees. Assignment to consultant or planning committee for review and recommendation if necessary.

September - Consultant recommendation to Grimes County if necessary.

October - Transmittal of Request to Commissioners Court for evaluation

November - Public Meeting

December - Consideration of requests by Commissioners Court resulting in approval, denial, or no action.

If approved, the amendment becomes effective March 1st of the following year, or when the map and guidelines are updated by Grimes County, whichever is first.

If denied, or if no action is taken, the applicant may resubmit the application during the next review cycle. Applications will only be considered if additional supporting data is presented. All steps in the process and all fees and notices apply.



**ORDER ADOPTING THE
2025 GRIMES COUNTY MOBILITY PLAN**

STATE OF TEXAS §
COUNTY OF GRIMES §

BE IT REMEMBERED that on the 2nd day of April, 2025, the Grimes County Commissioners Court convened in a duly called and noticed meeting.

WHEREAS, the Commissioners Court of Grimes County desires to identify the location and type of roadway and drainage facilities needed to meet the demands of long-term projected growth within the unincorporated areas of Grimes County; and

WHEREAS, the Commissioners Court of Grimes County acknowledges the need for these areas to remain clear of developments or any obstructions that may increase the cost and effort required to provide long-term mobility and drainage; and

WHEREAS, implementing mobility planning guidelines for public and private development projects, utilizing the resources available to Grimes County while pending a full update to the Grimes County Thoroughfare Plan, is critical to ensure continual mobility on County Roads in Grimes County; and

NOW, THEREFORE, BE IT ORDERED by the County of Grimes, State of Texas that:

1. The 2025 Grimes County Mobility Plan is hereby adopted effective immediately; and
2. The County Engineer and Development Coordinator shall be required to ensure that the 2025 Grimes County Mobility Plan is consistently and equitably applied to all public and private development in unincorporated Grimes County; and
3. The Grimes County Commissioners Court, and/or their designee(s), shall only approve plats, plans, and/or permits that conform to the 2025 Grimes County Mobility Plan.

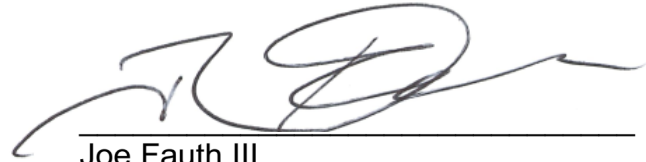
All the provisions of this Order are hereby declared to be severable, and if any provision herein is judicially declared to be invalid or unconstitutional, such judicial

Attachment A: Order Adopting the 2025 Grimes County Mobility Plan

declaration shall not invalidate or affect the remaining provisions of this Order which will remain in full force and effect.

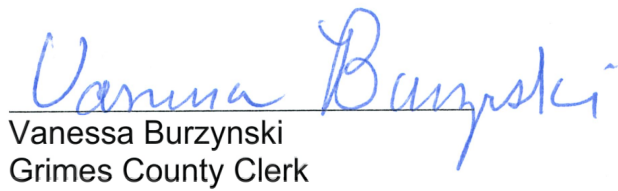
PASSED and ADOPTED on this 2nd day of April, 2025.

GRIMES COUNTY COMMISSIONERS COURT

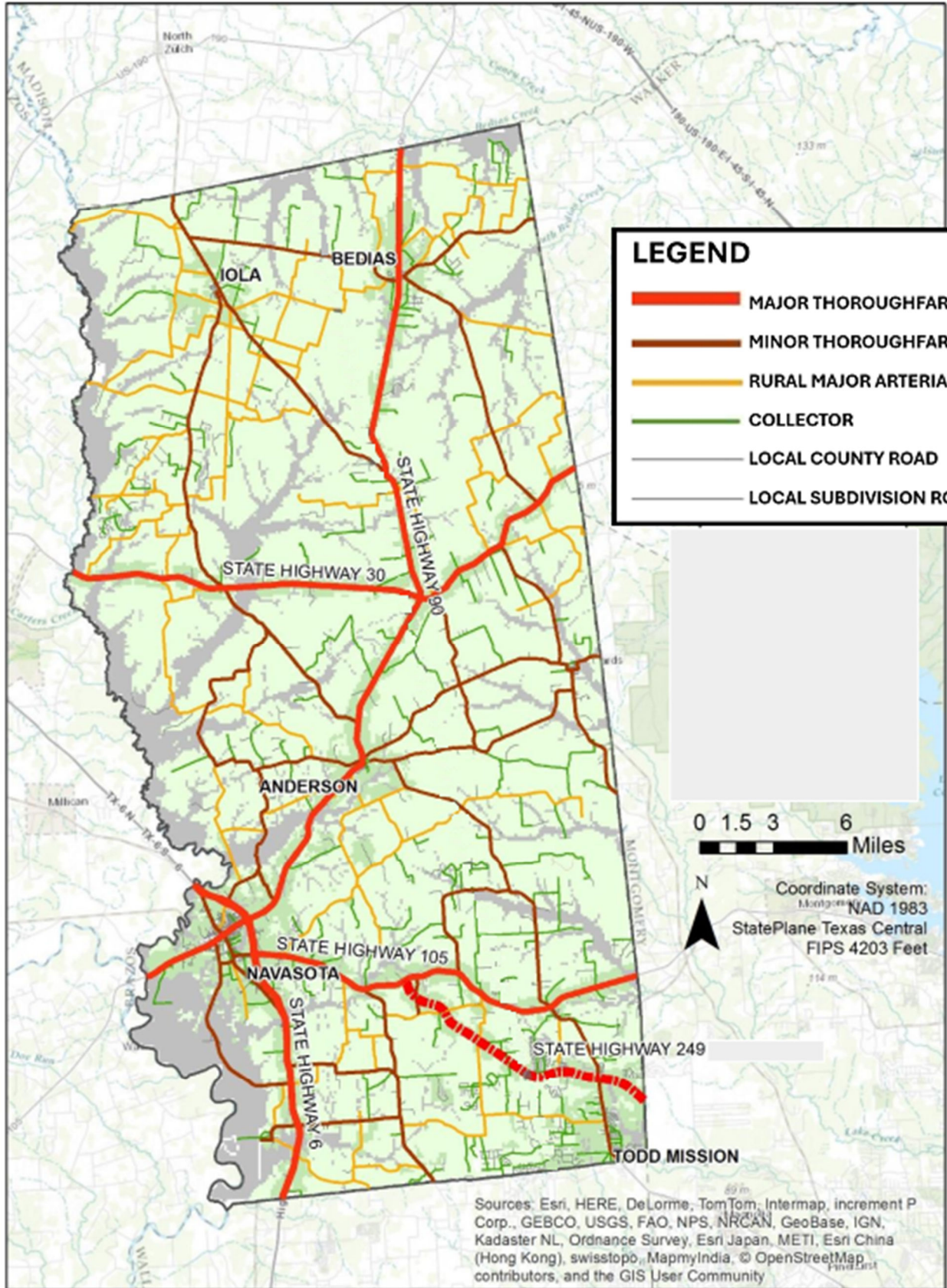
A handwritten signature in black ink, appearing to read "Joe Fauth III", written over a horizontal line.

Joe Fauth III
Grimes County Judge

ATTEST:

A handwritten signature in blue ink, appearing to read "Vanessa Burzynski", written over a horizontal line.

Vanessa Burzynski
Grimes County Clerk



Grimes County Road & Bridge Department



P.O. Box 593
Anderson, Texas 77830

Phone: (936) 873-4436
Fax: (936) 873-9909

Commissioners Court
Grimes County
Anderson, Texas

April 2nd, 2025

SUBJECT: Recommendation by the County Engineer and by the Grimes County Development Review Group that Commissioners' Court adopt the Grimes County Mobility Plan.

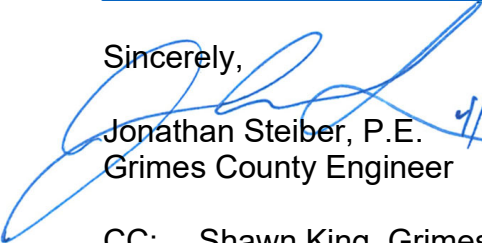
Dear Commissioners Court:

The Grimes County Development Review Group and the Grimes County Engineer recommend that Commissioners' Court adopt the 2025 Grimes County Mobility Plan to guarantee continued mobility across Grimes County's transportation network and to ensure that future right-of-way remains clear of development.

The Grimes County Mobility Plan was created based on the recommendations presented in the 2016 Grimes County Thoroughfare Plan, created in partnership between Grimes County and the Texas A&M University College of Architecture, Department of Landscape Architecture and Urban Planning, and on standard procedures for mobility planning in the region. Certain updates account for future drainage infrastructure and traffic impact analyses for projected development.

Questions may be directed to the County Engineer at 936-873-4436 or jonathan.steiber@grimescountytexas.gov.

Sincerely,


Jonathan Steiber, P.E.
Grimes County Engineer

4/2/25

CC: Shawn King, Grimes County Development Coordinator

Patti Ermis, Road and Bridge Department Director of Administration
Megan Barcak, Grimes County Attorney

Attachments:

- A. Order Approving the Grimes County Mobility Plan
- B. Grimes County Mobility Plan
- C. 2025 Grimes County Mobility Plan Map
- D. 2025 Grimes County Road Classification Matrix
- E. Grimes County Development Review Group Letter to Commissioners Court
November 26th, 2024

Attachment D: 2025 Road Classification Matrix

Road Name	Road Classification	Road Name	Road Classification
4TH ST	LOCAL	CARLTON SPEED RANCH RD	COLLECTOR
5TH ST	LOCAL	CAROLYN CT	LOCAL
6TH ST	LOCAL	CARRELL ST	LOCAL
ABBEY LN	LOCAL	CARTER RD	LOCAL
ACORN LN	LOCAL	CATHEY LN	LOCAL
ADA OAKS LN	LOCAL	CEDAR HILL LN	LOCAL
ADLER CIR	LOCAL	CEDAR RD	COLLECTOR
ADLER RD	LOCAL	CEMETERY RD	LOCAL
ALBERT DR	LOCAL	CHAMBERLAIN DR	LOCAL
ALBIN CIR	LOCAL	CHERRY LAUREL LN	LOCAL
ALMOND CT	LOCAL	CLARK RD	COLLECTOR
AMELIA DR	COLLECTOR	COACHWHIP CT	LOCAL
ANDERSON RIDGE LN	LOCAL	COLORADO ST	LOCAL
ASCOT TRL	LOCAL	COMMERCE AVE	LOCAL
ASKEW CT	LOCAL	COMMONWEALTH DR	LOCAL
ASKEW RD	COLLECTOR	CORNWALL LN	LOCAL
AUTUMN OAKS LN	LOCAL	CORSICANA ST	LOCAL
AVENUE A	LOCAL	COTTON ST	LOCAL
AZALEA LN	LOCAL	COTTONTAIL LN	LOCAL
B ST	LOCAL	COTTONWOOD LN	LOCAL
BAILEY ST	LOCAL	COUNTRY LN	LOCAL
BALMORAL BND	LOCAL	COUNTY ROAD 101	ARTERIAL
BALSA RD	LOCAL	COUNTY ROAD 102	ARTERIAL
BARN OWL LN	LOCAL	COUNTY ROAD 103	ARTERIAL
BARNETT RD	LOCAL	COUNTY ROAD 104	COLLECTOR
BEDFORD CT	LOCAL	COUNTY ROAD 104A	LOCAL
BELGRAVE SQ	LOCAL	COUNTY ROAD 106	COLLECTOR
BISHOP BND	LOCAL	COUNTY ROAD 107	ARTERIAL
BLUE HERON DR	LOCAL	COUNTY ROAD 108	ARTERIAL
BLUEBONNET LN	COLLECTOR	COUNTY ROAD 109	ARTERIAL
BOB MATHEWS ST	COLLECTOR	COUNTY ROAD 110	ARTERIAL
BOGOTA DR	LOCAL	COUNTY ROAD 112	COLLECTOR
BOIS DARC LN	LOCAL	COUNTY ROAD 113	COLLECTOR
BRACEWELL RD	COLLECTOR	COUNTY ROAD 113 S	LOCAL
BRAZOS ST	LOCAL	COUNTY ROAD 113A	LOCAL
BREEZEWOOD DR	LOCAL	COUNTY ROAD 114	COLLECTOR
BRIAR CIR	LOCAL	COUNTY ROAD 115	ARTERIAL
BRIDLE CT	LOCAL	COUNTY ROAD 115A	LOCAL
BURGESS RD	COLLECTOR	COUNTY ROAD 116	LOCAL
CAJUN RDG	COLLECTOR	COUNTY ROAD 117	ARTERIAL
CAMBRIDGE DR	LOCAL	COUNTY ROAD 118	COLLECTOR
CAMELIA LN	LOCAL	COUNTY ROAD 118A	LOCAL
CAMPBELL AVE	LOCAL	COUNTY ROAD 119	COLLECTOR

Road Name	Road Classification	Road Name	Road Classification
COUNTY ROAD 120	COLLECTOR	COUNTY ROAD 166	ARTERIAL
COUNTY ROAD 121	COLLECTOR	COUNTY ROAD 167	LOCAL
COUNTY ROAD 122	LOCAL	COUNTY ROAD 168	COLLECTOR
COUNTY ROAD 123	ARTERIAL	COUNTY ROAD 169	COLLECTOR
COUNTY ROAD 124	ARTERIAL	COUNTY ROAD 170	COLLECTOR
COUNTY ROAD 125	ARTERIAL	COUNTY ROAD 171	COLLECTOR
COUNTY ROAD 126	ARTERIAL	COUNTY ROAD 172	ARTERIAL
COUNTY ROAD 127	ARTERIAL	COUNTY ROAD 173	ARTERIAL
COUNTY ROAD 128	COLLECTOR	COUNTY ROAD 174	ARTERIAL
COUNTY ROAD 129	ARTERIAL	COUNTY ROAD 175	ARTERIAL
COUNTY ROAD 130	COLLECTOR	COUNTY ROAD 176	ARTERIAL
COUNTY ROAD 131	COLLECTOR	COUNTY ROAD 177	COLLECTOR
COUNTY ROAD 132	ARTERIAL	COUNTY ROAD 178	COLLECTOR
COUNTY ROAD 133	COLLECTOR	COUNTY ROAD 179	LOCAL
COUNTY ROAD 134	ARTERIAL	COUNTY ROAD 180	COLLECTOR
COUNTY ROAD 136	COLLECTOR	COUNTY ROAD 181	LOCAL
COUNTY ROAD 137	ARTERIAL	COUNTY ROAD 183	LOCAL
COUNTY ROAD 138	LOCAL	COUNTY ROAD 185	ARTERIAL
COUNTY ROAD 139	COLLECTOR	COUNTY ROAD 186	ARTERIAL
COUNTY ROAD 140	ARTERIAL	COUNTY ROAD 187	COLLECTOR
COUNTY ROAD 142	COLLECTOR	COUNTY ROAD 188	COLLECTOR
COUNTY ROAD 143	COLLECTOR	COUNTY ROAD 189	COLLECTOR
COUNTY ROAD 144	COLLECTOR	COUNTY ROAD 190	ARTERIAL
COUNTY ROAD 145	COLLECTOR	COUNTY ROAD 192	ARTERIAL
COUNTY ROAD 146	ARTERIAL	COUNTY ROAD 201	ARTERIAL
COUNTY ROAD 147	COLLECTOR	COUNTY ROAD 201 LOOP	LOCAL
COUNTY ROAD 148	COLLECTOR	COUNTY ROAD 202	COLLECTOR
COUNTY ROAD 150	COLLECTOR	COUNTY ROAD 203	COLLECTOR
COUNTY ROAD 151	LOCAL	COUNTY ROAD 204	COLLECTOR
COUNTY ROAD 152	COLLECTOR	COUNTY ROAD 205	LOCAL
COUNTY ROAD 153	COLLECTOR	COUNTY ROAD 206	COLLECTOR
COUNTY ROAD 154	LOCAL	COUNTY ROAD 206A	LOCAL
COUNTY ROAD 155	COLLECTOR	COUNTY ROAD 207	COLLECTOR
COUNTY ROAD 156	LOCAL	COUNTY ROAD 207A	LOCAL
COUNTY ROAD 157	ARTERIAL	COUNTY ROAD 207B	LOCAL
COUNTY ROAD 158	LOCAL	COUNTY ROAD 208	COLLECTOR
COUNTY ROAD 159	LOCAL	COUNTY ROAD 209	LOCAL
COUNTY ROAD 160	COLLECTOR	COUNTY ROAD 210	COLLECTOR
COUNTY ROAD 161	ARTERIAL	COUNTY ROAD 211	COLLECTOR
COUNTY ROAD 162	ARTERIAL	COUNTY ROAD 212	COLLECTOR
COUNTY ROAD 163	COLLECTOR	COUNTY ROAD 213	LOCAL
COUNTY ROAD 164	ARTERIAL	COUNTY ROAD 214	LOCAL
COUNTY ROAD 165	COLLECTOR	COUNTY ROAD 215	ARTERIAL

Road Name	Road Classification	Road Name	Road Classification
COUNTY ROAD 216	COLLECTOR	COUNTY ROAD 262	COLLECTOR
COUNTY ROAD 217	COLLECTOR	COUNTY ROAD 277	LOCAL
COUNTY ROAD 218	LOCAL	COUNTY ROAD 278C	LOCAL
COUNTY ROAD 219	COLLECTOR	COUNTY ROAD 279	LOCAL
COUNTY ROAD 220	COLLECTOR	COUNTY ROAD 280	LOCAL
COUNTY ROAD 221	LOCAL	COUNTY ROAD 302	ARTERIAL
COUNTY ROAD 222	COLLECTOR	COUNTY ROAD 303	COLLECTOR
COUNTY ROAD 223	LOCAL	COUNTY ROAD 304	ARTERIAL
COUNTY ROAD 224	COLLECTOR	COUNTY ROAD 305	COLLECTOR
COUNTY ROAD 224A	LOCAL	COUNTY ROAD 306	ARTERIAL
COUNTY ROAD 225	COLLECTOR	COUNTY ROAD 307	COLLECTOR
COUNTY ROAD 226	COLLECTOR	COUNTY ROAD 308	COLLECTOR
COUNTY ROAD 227	ARTERIAL	COUNTY ROAD 309	COLLECTOR
COUNTY ROAD 228	ARTERIAL	COUNTY ROAD 310	LOCAL
COUNTY ROAD 229	ARTERIAL	COUNTY ROAD 312	LOCAL
COUNTY ROAD 231	COLLECTOR	COUNTY ROAD 313	COLLECTOR
COUNTY ROAD 232	ARTERIAL	COUNTY ROAD 314	ARTERIAL
COUNTY ROAD 232A	LOCAL	COUNTY ROAD 314A	ARTERIAL
COUNTY ROAD 232B	LOCAL	COUNTY ROAD 315	ARTERIAL
COUNTY ROAD 233	ARTERIAL	COUNTY ROAD 316	ARTERIAL
COUNTY ROAD 234	COLLECTOR	COUNTY ROAD 316A	COLLECTOR
COUNTY ROAD 235	COLLECTOR	COUNTY ROAD 317	LOCAL
COUNTY ROAD 236	COLLECTOR	COUNTY ROAD 318	ARTERIAL
COUNTY ROAD 237	COLLECTOR	COUNTY ROAD 319	ARTERIAL
COUNTY ROAD 238	LOCAL	COUNTY ROAD 320	COLLECTOR
COUNTY ROAD 239	LOCAL	COUNTY ROAD 321	LOCAL
COUNTY ROAD 240	LOCAL	COUNTY ROAD 322	COLLECTOR
COUNTY ROAD 241	LOCAL	COUNTY ROAD 323	ARTERIAL
COUNTY ROAD 242	COLLECTOR	COUNTY ROAD 324	ARTERIAL
COUNTY ROAD 242A	LOCAL	COUNTY ROAD 325	ARTERIAL
COUNTY ROAD 243	LOCAL	COUNTY ROAD 326	ARTERIAL
COUNTY ROAD 245	COLLECTOR	COUNTY ROAD 327	LOCAL
COUNTY ROAD 246	ARTERIAL	COUNTY ROAD 328	COLLECTOR
COUNTY ROAD 247	COLLECTOR	COUNTY ROAD 329	COLLECTOR
COUNTY ROAD 248	LOCAL	COUNTY ROAD 330	COLLECTOR
COUNTY ROAD 250	LOCAL	COUNTY ROAD 331	LOCAL
COUNTY ROAD 251	COLLECTOR	COUNTY ROAD 332	LOCAL
COUNTY ROAD 252	COLLECTOR	COUNTY ROAD 333	COLLECTOR
COUNTY ROAD 253	COLLECTOR	COUNTY ROAD 334	LOCAL
COUNTY ROAD 254	LOCAL	COUNTY ROAD 334A	LOCAL
COUNTY ROAD 259	LOCAL	COUNTY ROAD 337	LOCAL
COUNTY ROAD 260	LOCAL	COUNTY ROAD 340	LOCAL
COUNTY ROAD 261	LOCAL	COUNTY ROAD 342	COLLECTOR

Road Name	Road Classification	Road Name	Road Classification
COUNTY ROAD 344	LOCAL	COUNTY ROAD 449	LOCAL
COUNTY ROAD 345	LOCAL	COUNTY ROAD 450	LOCAL
COUNTY ROAD 347	COLLECTOR	COUNTY ROAD 451	LOCAL
COUNTY ROAD 351	COLLECTOR	COUNTY ROAD 452	COLLECTOR
COUNTY ROAD 354	LOCAL	CRAPE MYRTLE LN	LOCAL
COUNTY ROAD 355	COLLECTOR	CRAWFORD RD	LOCAL
COUNTY ROAD 357	LOCAL	CREEK VIEW LN	LOCAL
COUNTY ROAD 359	LOCAL	CRYSTAL LN	LOCAL
COUNTY ROAD 401	COLLECTOR	DEBBIE LN	COLLECTOR
COUNTY ROAD 403	ARTERIAL	DEER CREEK LN	COLLECTOR
COUNTY ROAD 404	ARTERIAL	DEER RIDGE RD	LOCAL
COUNTY ROAD 405	ARTERIAL	DEER RUN	LOCAL
COUNTY ROAD 406	ARTERIAL	DEWBERRY LN	LOCAL
COUNTY ROAD 407	COLLECTOR	DOBBINS LN	LOCAL
COUNTY ROAD 408	COLLECTOR	DOGWOOD CT	LOCAL
COUNTY ROAD 409	COLLECTOR	DOGWOOD LN	LOCAL
COUNTY ROAD 410	COLLECTOR	DOGWOOD PL	LOCAL
COUNTY ROAD 411	LOCAL	DOGWOOD TRL	COLLECTOR
COUNTY ROAD 412	COLLECTOR	DUKE LN	LOCAL
COUNTY ROAD 413	COLLECTOR	E HOLLYHILL DR	COLLECTOR
COUNTY ROAD 413A	LOCAL	EDINBURG TRL	LOCAL
COUNTY ROAD 414	LOCAL	EDWARD AVE	LOCAL
COUNTY ROAD 415	COLLECTOR	ELECTRIC LN	LOCAL
COUNTY ROAD 416	COLLECTOR	ELM ST	LOCAL
COUNTY ROAD 416A	LOCAL	ENGLISH RD	LOCAL
COUNTY ROAD 416B	LOCAL	ETHEL AVE	LOCAL
COUNTY ROAD 417	COLLECTOR	EVERGREEN FOREST LN	COLLECTOR
COUNTY ROAD 417A	COLLECTOR	FAIRVIEW CEMETERY RD	LOCAL
COUNTY ROAD 419	LOCAL	FAWN OAKS RIDGE	LOCAL
COUNTY ROAD 420	LOCAL	FAWN OAKS TRL	LOCAL
COUNTY ROAD 420A	LOCAL	FERNANDEZ ST	LOCAL
COUNTY ROAD 421	LOCAL	FLETCHER	LOCAL
COUNTY ROAD 422	LOCAL	FOREST LN	LOCAL
COUNTY ROAD 423	COLLECTOR	FOSTER DR	COLLECTOR
COUNTY ROAD 424	COLLECTOR	FULTON ST	LOCAL
COUNTY ROAD 425	LOCAL	GILPIN LN	COLLECTOR
COUNTY ROAD 429	LOCAL	GLASS RD	COLLECTOR
COUNTY ROAD 442	LOCAL	GLENNSWOOD DR	LOCAL
COUNTY ROAD 444	LOCAL	GLOUCESTER AVE	LOCAL
COUNTY ROAD 445	COLLECTOR	GOLDENRAIN LN	LOCAL
COUNTY ROAD 446	ARTERIAL	GRAND FLOWER DR	LOCAL
COUNTY ROAD 447	ARTERIAL	GRANITE RIDGE DR	COLLECTOR
COUNTY ROAD 448	COLLECTOR	GREENBRIAR	COLLECTOR

Road Name	Road Classification	Road Name	Road Classification
GREENWAY	COLLECTOR	LANCASTER DR	LOCAL
GUADALUPE ST	LOCAL	LARS CIR	LOCAL
HALL LN	LOCAL	LEEWARD CV	LOCAL
HAMMOND CIR	LOCAL	LEIGH COURT	LOCAL
HAMPTON CIR	LOCAL	LEON ST	LOCAL
HAMPTON CT	LOCAL	LIVE OAK DR	COLLECTOR
HARRISON DR	COLLECTOR	LIVELY RD	LOCAL
HENLEY CV	LOCAL	LOBLOLLY LN	LOCAL
HICKORY HILL RD	LOCAL	LOFTY PINES LN	LOCAL
HICKORY POST RD	LOCAL	LONE STAR RD	COLLECTOR
HICKORY RD	COLLECTOR	LONG DR	LOCAL
HICKORY ST	LOCAL	LONG SHADOWS RD	LOCAL
HIDDEN POND DR	LOCAL	LONGS CIR	LOCAL
HILL FOREST LN	LOCAL	LOST QUAIL CT	LOCAL
HILL ST	LOCAL	LUTHE RD	COLLECTOR
HILLSIDE CT	LOCAL	LYNN ST	LOCAL
HILLTOP RD	LOCAL	MAGAN RD	COLLECTOR
HOLLAND CREEK DR	LOCAL	MAGNOLIA DR	LOCAL
HOLLY AVE	LOCAL	MAGNOLIA SPGS	COLLECTOR
HOLLY BERRY LN	LOCAL	MAGNOLIA ST	LOCAL
HOLLY CT	LOCAL	MAGNOLIA TRL	LOCAL
HOLLY LYNN LN	LOCAL	MAIN ST	LOCAL
HOMESTEAD LN	COLLECTOR	MARTY RD	LOCAL
HORSESHOE BND	LOCAL	MATA RD	LOCAL
HORSESHOE DR	LOCAL	MAYFIELD AVE	LOCAL
HORTENSE AVE	LOCAL	MC INTYRE ST	LOCAL
HORTON AVE	LOCAL	MEADOW CT	LOCAL
HUCKLEBERRY DR	LOCAL	MICREA RD	COLLECTOR
INDEPENDENCE DR	COLLECTOR	MIKE POE DR	LOCAL
INDUSTRIAL DR	LOCAL	MILL CREEK DR S	LOCAL
INTERSTATE DR	LOCAL	MILL CREEK RUN	LOCAL
JOEE LN	COLLECTOR	MILLSTONE DR	COLLECTOR
JOHN RICE DR	ARTERIAL	MONTGOMERY ST	LOCAL
JOUBERT RD	COLLECTOR	MOSSYKNOLL DR	LOCAL
JUBILEE TRL	COLLECTOR	MOUNTBATTEN TRL	LOCAL
JUNIPER LN	LOCAL	MULBERRY ST	LOCAL
KENSINGTON CT	LOCAL	N GUADALUPE ST	LOCAL
KING OAKS DR	LOCAL	NAVASOTA ST	LOCAL
KNOB HILL RD	LOCAL	NORMAN AVE	LOCAL
LAKECREST DR	LOCAL	NORTH HILL RD	COLLECTOR
LAKESHORE DR	COLLECTOR	NORTH LOOP DR	LOCAL
LAKEVIEW DR E	LOCAL	NORTH OAKS DR	COLLECTOR
LAKEVIEW DR W	LOCAL	NORTH VISTA DR	LOCAL

Road Name	Road Classification	Road Name	Road Classification
NORTHWEST PSGE	LOCAL	RAINBOWS END LN	LOCAL
OAK DR	LOCAL	RED OAK DR	LOCAL
OAK FOREST DR	COLLECTOR	REDBUD LN	LOCAL
OAK HILL LN	LOCAL	REDING RD	LOCAL
OAK HOLLOW LN	LOCAL	REDWOOD CT	LOCAL
OAK RIDGE DR	LOCAL	REDWOOD HOLLOW DR	LOCAL
OAK ST	LOCAL	RENFAIRE DR	COLLECTOR
OAKTREE CT	LOCAL	RIDGE RD	LOCAL
OLD BRIDGE RD	COLLECTOR	RIDGEWOOD DR	LOCAL
OVERHILL RD	LOCAL	RIVER OAKS DR	LOCAL
OWL TREE LN	LOCAL	RODEMEL RANCH RD	COLLECTOR
OXFORD LN	LOCAL	RODEO DR	COLLECTOR
PANTHER CREEK DR	LOCAL	ROESE RD	ARTERIAL
PANTHER CREEK RD	LOCAL	ROLLING ACRES RD	LOCAL
PANTHER DR	LOCAL	ROLLING HILL DR	COLLECTOR
PANTHER RIDGE DR	LOCAL	ROLLING HILL LN	LOCAL
PAPPAS RD	LOCAL	ROLLING OAKS DR	LOCAL
PARK ST	LOCAL	ROY HALL RD	COLLECTOR
PARKVIEW DR	LOCAL	ROYAL FOREST LN	LOCAL
PAULHILL ST	LOCAL	ROYAL OAK CT	LOCAL
PAVLOCK RD	COLLECTOR	RUSTIC LN	LOCAL
PEARL LN	COLLECTOR	RUSTLING OAKS LN	LOCAL
PECAN RD	LOCAL	S MAIN ST	LOCAL
PECOS ST	LOCAL	S RICHARDS ST	LOCAL
PERRO LN	LOCAL	S TRINITY ST	LOCAL
PHILLIPS RD	COLLECTOR	SABINE ST	LOCAL
PIN OAK DR	LOCAL	SADDLE RDG	LOCAL
PIN OAK RDG	LOCAL	SAND ST	LOCAL
PIN OAK TRACE	LOCAL	SCARBOROUGH DR	LOCAL
PINE LN	LOCAL	SEVENTH AVE	LOCAL
PINE ST	LOCAL	SHADOWS END DR	LOCAL
PINE TREE CT	LOCAL	SHIFLET LN	LOCAL
PINE VALLEY RD	COLLECTOR	SILENTWOOD LN	LOCAL
PINEBROOK DR	COLLECTOR	SKILLET BEND LN	LOCAL
PINEBROOK EXTENSION	COLLECTOR	SLOT RD	COLLECTOR
PINEY CT	LOCAL	SMITHWAY DR	LOCAL
PINEY OAKS LN	LOCAL	SOUTH BRANCH DR	LOCAL
PLANTERS ROW	COLLECTOR	SOUTH CREEK LN	LOCAL
POST OAK RD	COLLECTOR	SOUTH FORK LN	LOCAL
PRAIRIE CIR	LOCAL	SOUTH HILL RD	LOCAL
RABUN RD	LOCAL	SOUTH OAKS DR	COLLECTOR
RAILROAD AVE	LOCAL	SOUTHERN HILL DR	COLLECTOR
RAILROAD ST	LOCAL	ST JOHNS DR	LOCAL

Road Name	Road Classification	Road Name	Road Classification
STABLEWOOD TER	LOCAL	WINDY ACRES LN	LOCAL
STEEPLECHASE PKWY	LOCAL	WINGARD AVE	LOCAL
STILLMEADOW LN	LOCAL	WOOD DUCK CT	LOCAL
STONE BRIDGE PKWY	LOCAL	WOODFOREST DR	LOCAL
STRATHMORE DR	LOCAL	WRANGLER LN	COLLECTOR
SUN BELT RD	LOCAL	WYRICK RD	LOCAL
SUNSHINE VALLEY LN	LOCAL	YAUPON BERRY DR	LOCAL
TALL PINE RD	COLLECTOR	YERBY RD	COLLECTOR
TARA LN	LOCAL	YOUPON DR	LOCAL
TAWNYBERRY LN	LOCAL		
TERRACE OAKS DR	LOCAL		
THANE RD	LOCAL		
THERESA RD	LOCAL		
TIERRA BUENA DR	COLLECTOR		
TIMBERWOLF TRL	COLLECTOR		
TREE BEND LN	LOCAL		
TRINITY ST	LOCAL		
TULIP TREE LN	LOCAL		
TUTTLE LN	LOCAL		
VALLEY RIDGE DR	LOCAL		
VALLEY VIEW DR	LOCAL		
VISTA HILLS DR	COLLECTOR		
VISTA LAKE CT	LOCAL		
VOLUNTEER AVE	LOCAL		
W HOLLYHILL DR	LOCAL		
WAGON WHEEL RD	LOCAL		
WALES CT	LOCAL		
WALNUT HILL LN	LOCAL		
WALNUT RD	LOCAL		
WALNUT ST	LOCAL		
WEeping WILLOW LN	LOCAL		
WESSEX BND	LOCAL		
WEST LOOP DR	LOCAL		
WESTMINSTER AVE	LOCAL		
WESTON LN	LOCAL		
WHIPPOORWILL RD	COLLECTOR		
WHITAKER WAY	LOCAL		
WILLIAMS ST	LOCAL		
WILLIAMSON ST	LOCAL		
WILLOW OAK DR	LOCAL		
WILLOW PLACE RD	LOCAL		
WINDING MEADOW DR	LOCAL		
WINDSOR AVE	LOCAL		